



APPROVED	O.G. FIG.	
BY	CLASS	SUBCLASS
DRAFTSMAN		

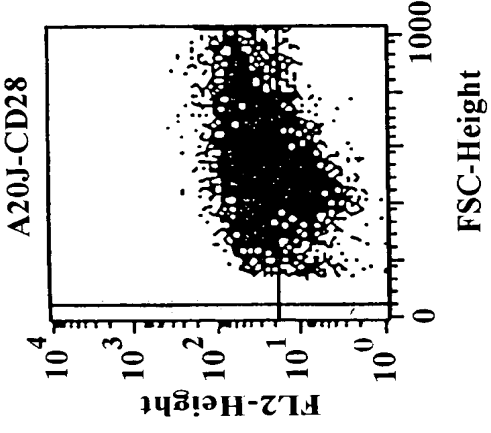


FIG. 1B

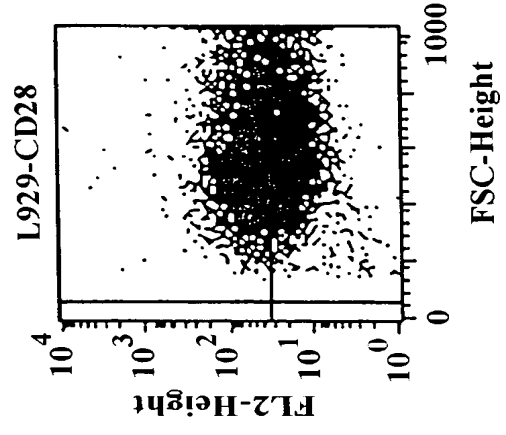


FIG. 1D

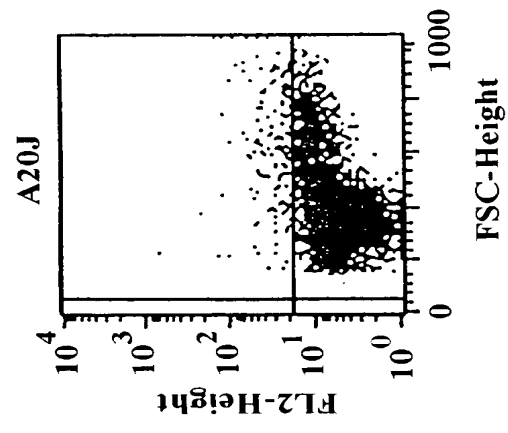


FIG. 1A

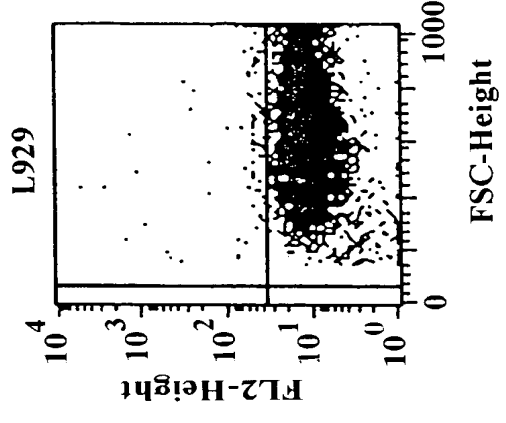


FIG. 1C

ANTI-CD28-PE





APPROVED	O.G. FIG.	
BY	CLASS	SUBCLASS
DRAFTSMAN		

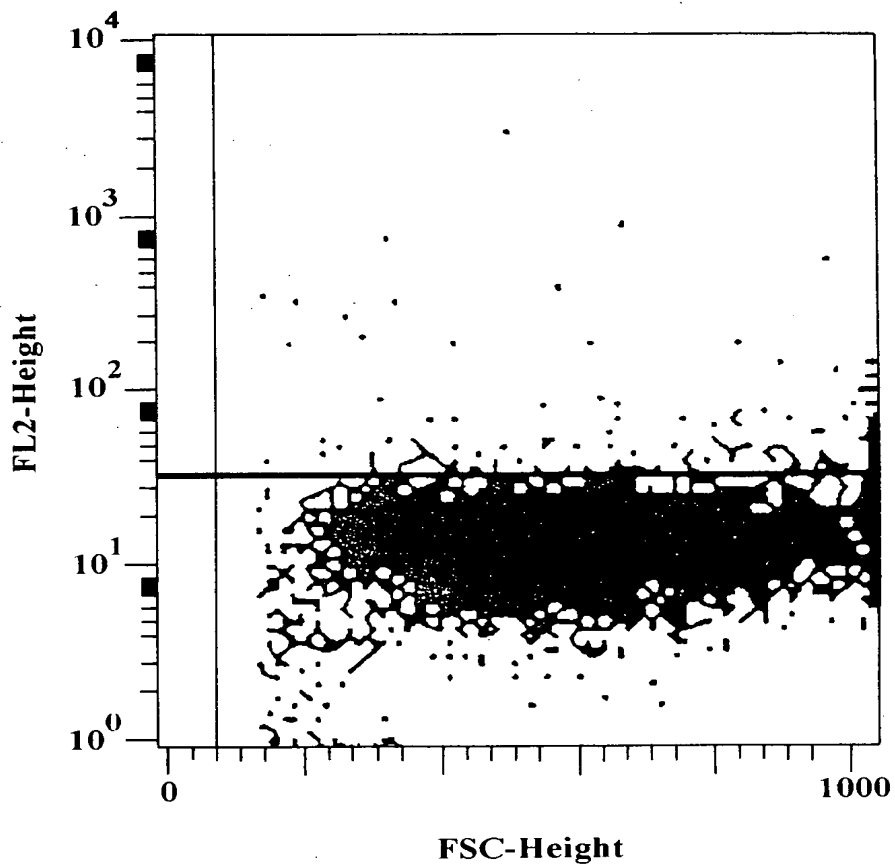


FIG. 2A



APPROVED	O.G. FIG.
BY	CLASS
DRAFTSMAN	SUBCLASS

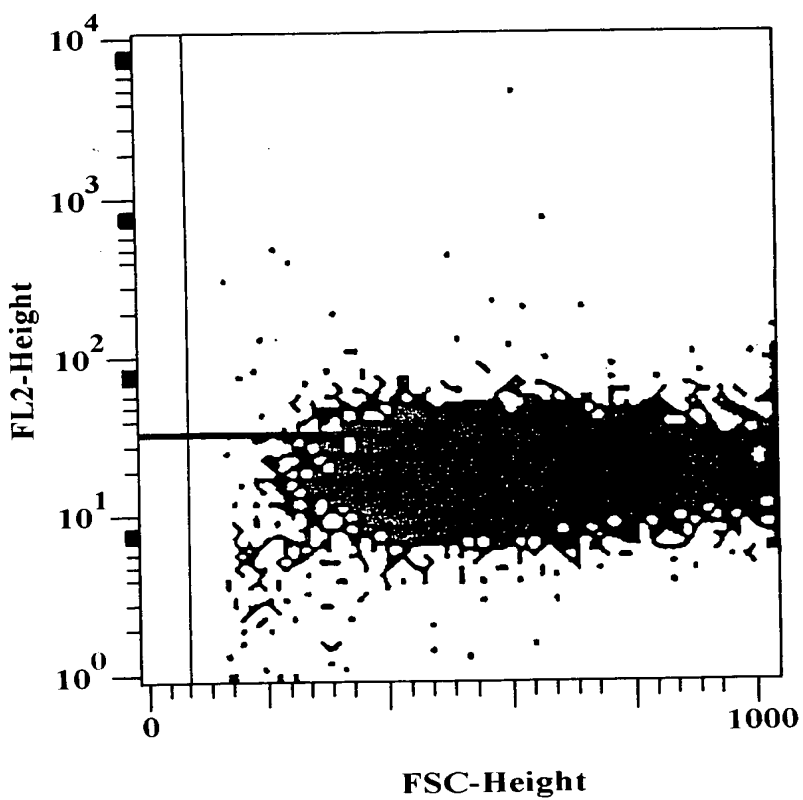


FIG. 2B



APPROVED	O.G. FIG.	
BY	CLASS	SUBCLASS
DRAFTSMAN		

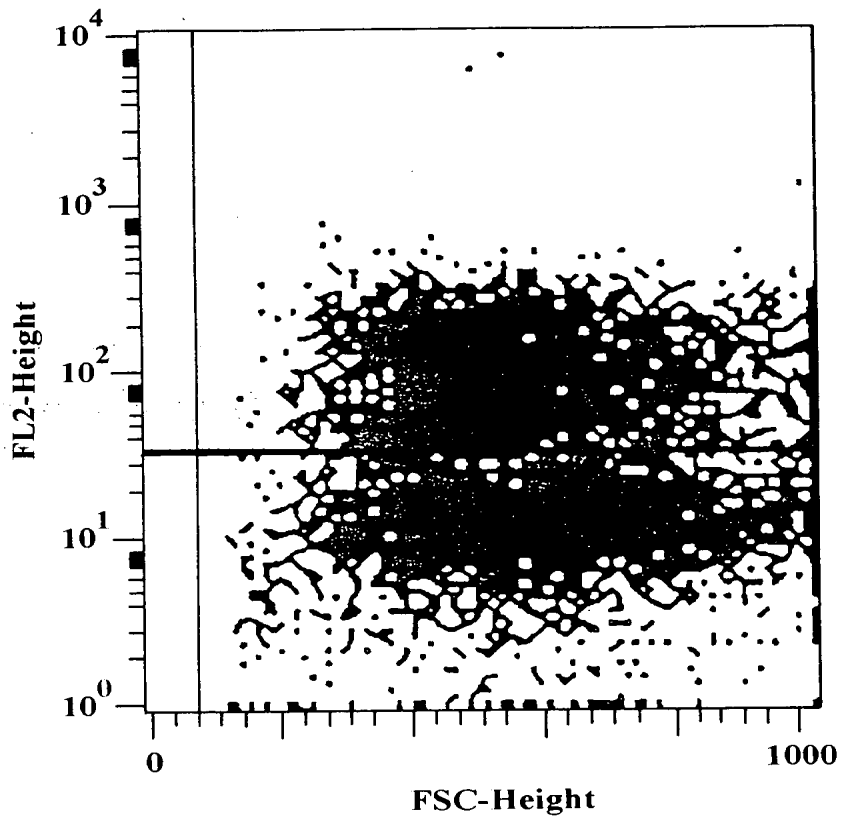


FIG. 2C



APPROVED	O.G. FIG.	
	CLASS	SUBCLASS
BY	DRAFTSMAN	

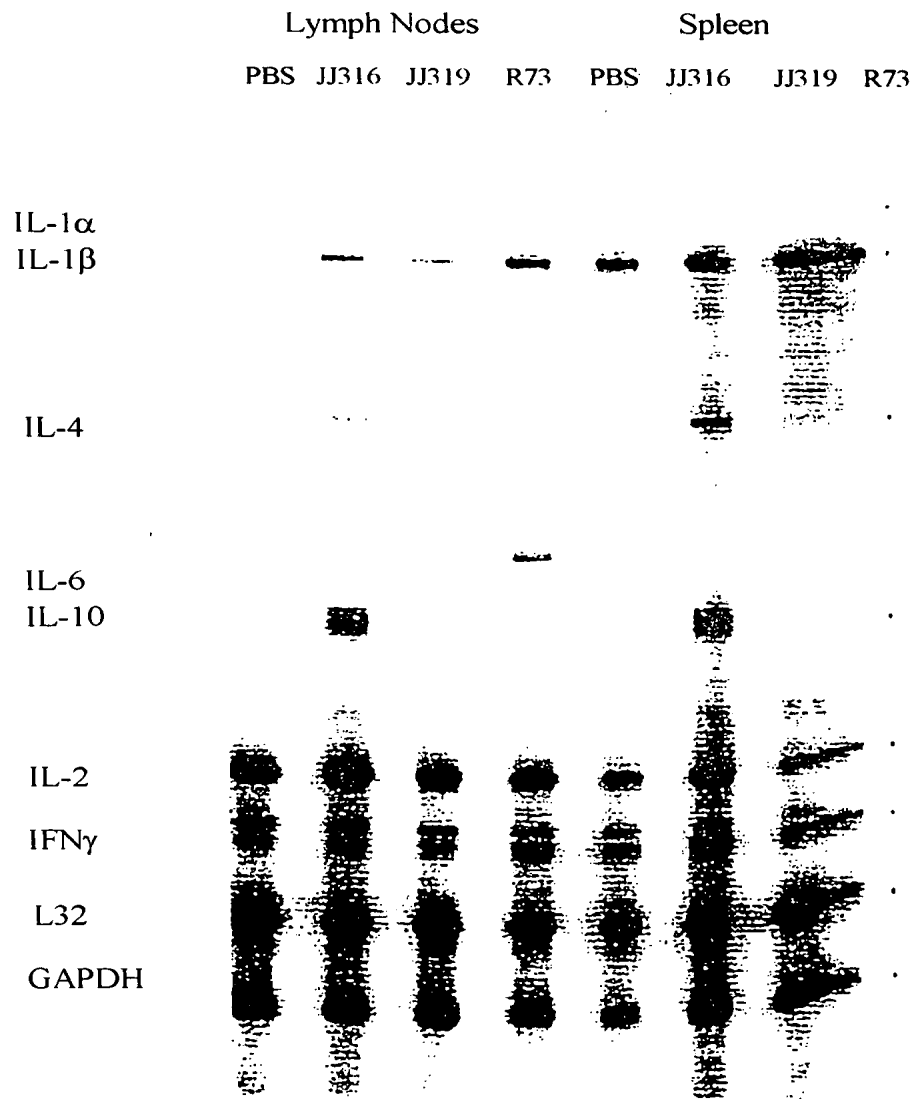


FIG. 3



APPROVED	O.G. FIG.	
BY	CLASS	SUBCLASS
DRAFTSMAN		

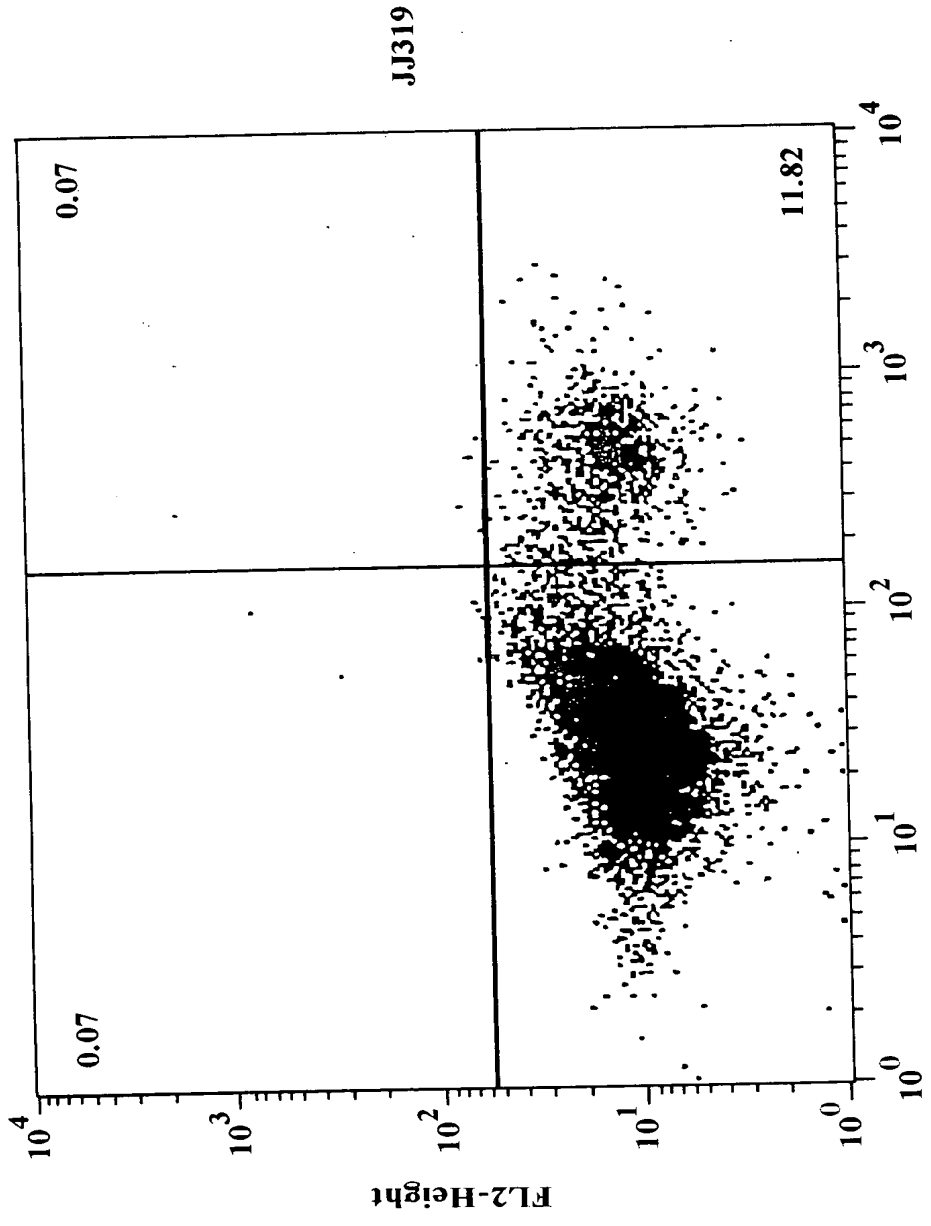


FIG. 4A



APPROVED	O.G. FIG.	
BY	CLASS	SUBCLASS
DRAFTSMAN		

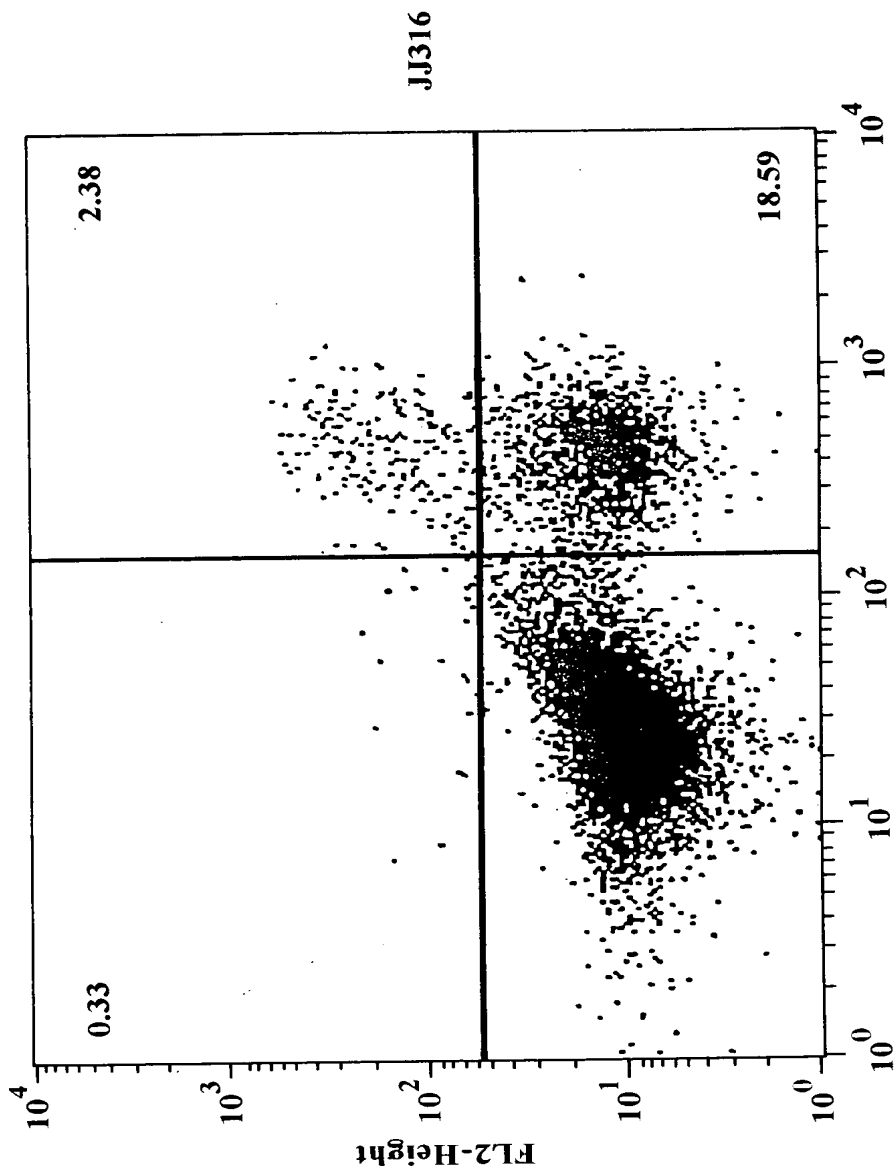


FIG. 4B



APPROVED	O.G. FIG.	
BY	CLASS	SUBCLASS
DRAFTSMAN		

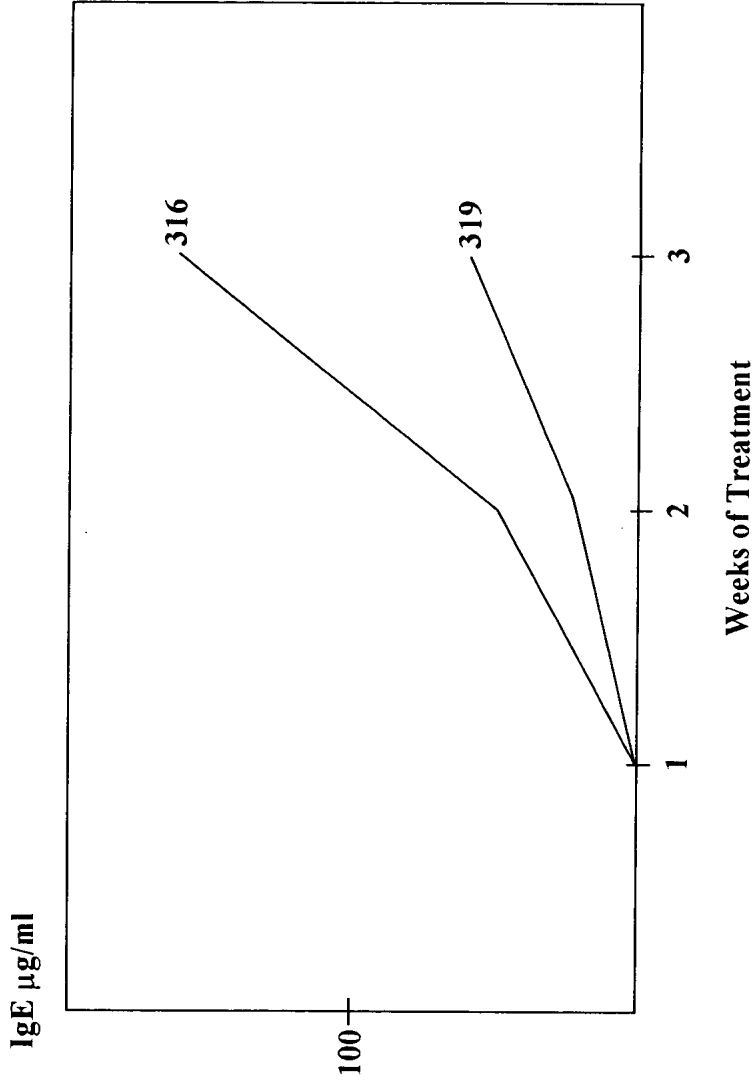
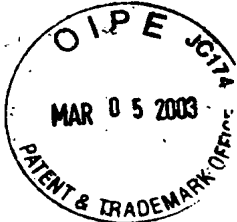
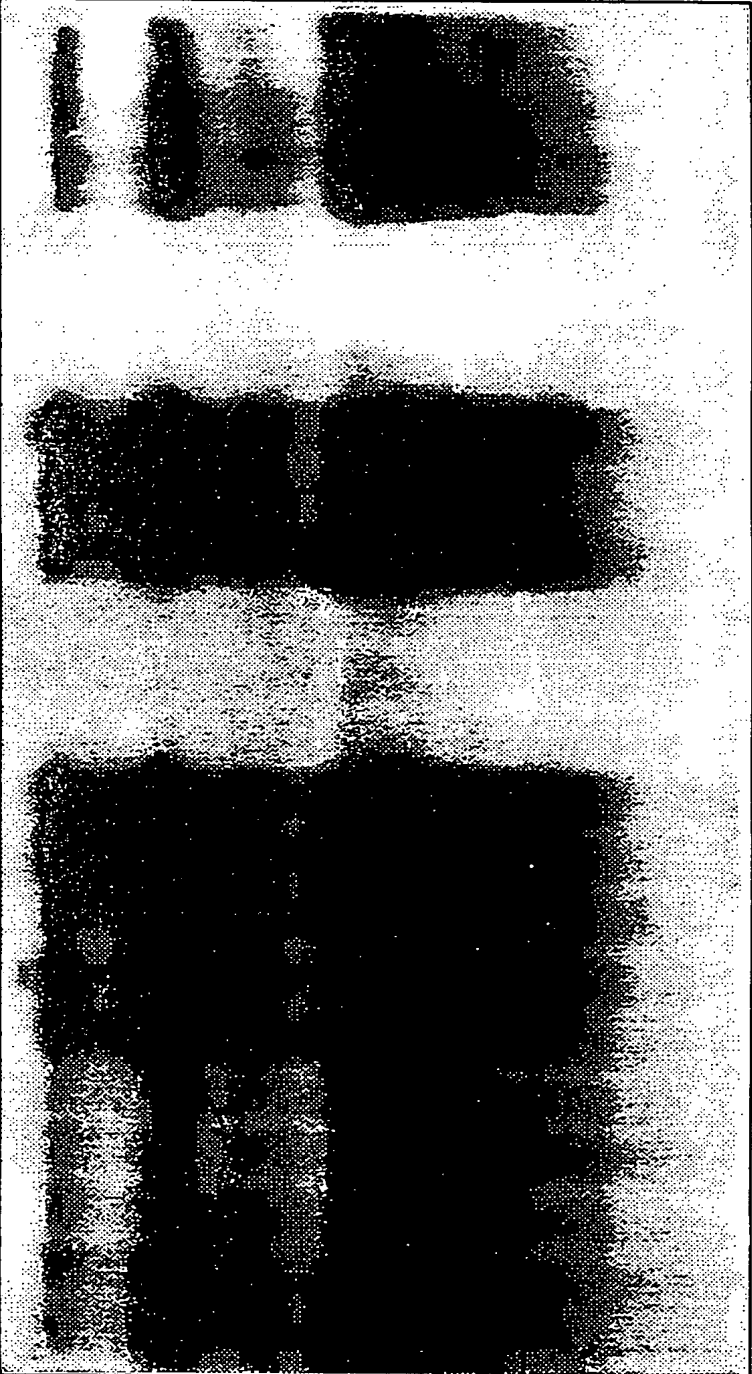


FIG. 5



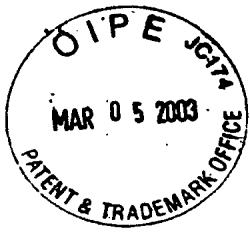
APPROVED BY DRAFTSMAN	O.G. FIG.	
	CLASS	SUBCLASS

Stimuli	TCR	TCR + class. CD28	"direct" CD28	class. CD28
Medium				
0, 4, 8, 16,	4, 8, 16,	4, 8, 16,	4, 8, 16,	4, 8, 16,
Special Component	—	+++	—	—



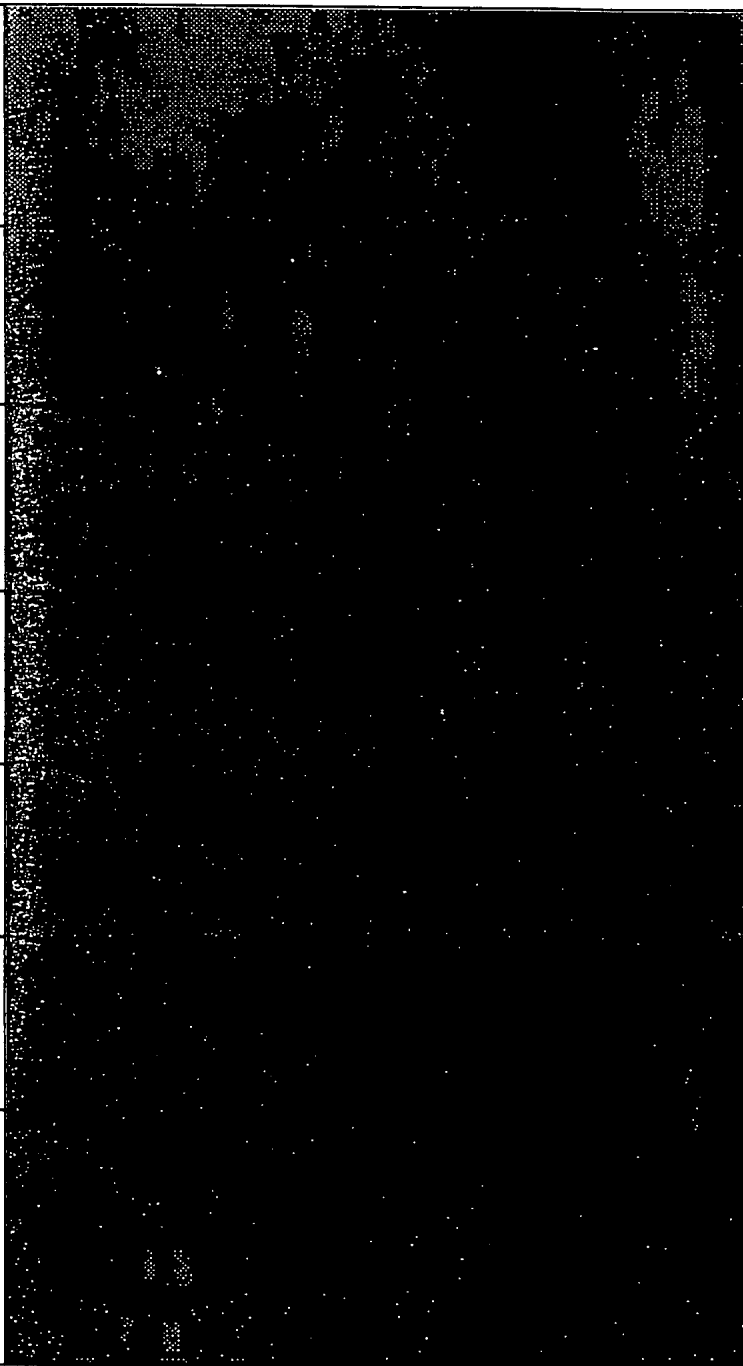
c-Maf

FIG. 6



APPROVED BY DRAFTSMAN	O.G. FIG.	
	CLASS	SUBCLASS

Stimuli	TCR	TCR + class. CD28	"direct" CD28	class. CD28
0, 4, 8, 16,	4, 8, 16,	4, 8, 16,	4, 8, 16,	4, 8, 16
_____	_____	+++	_____	_____



GATA 3

FIG. 7



APPROVED	O.G. FIG.	
BY	CLASS	SUBCLASS
DRAFTSMAN		

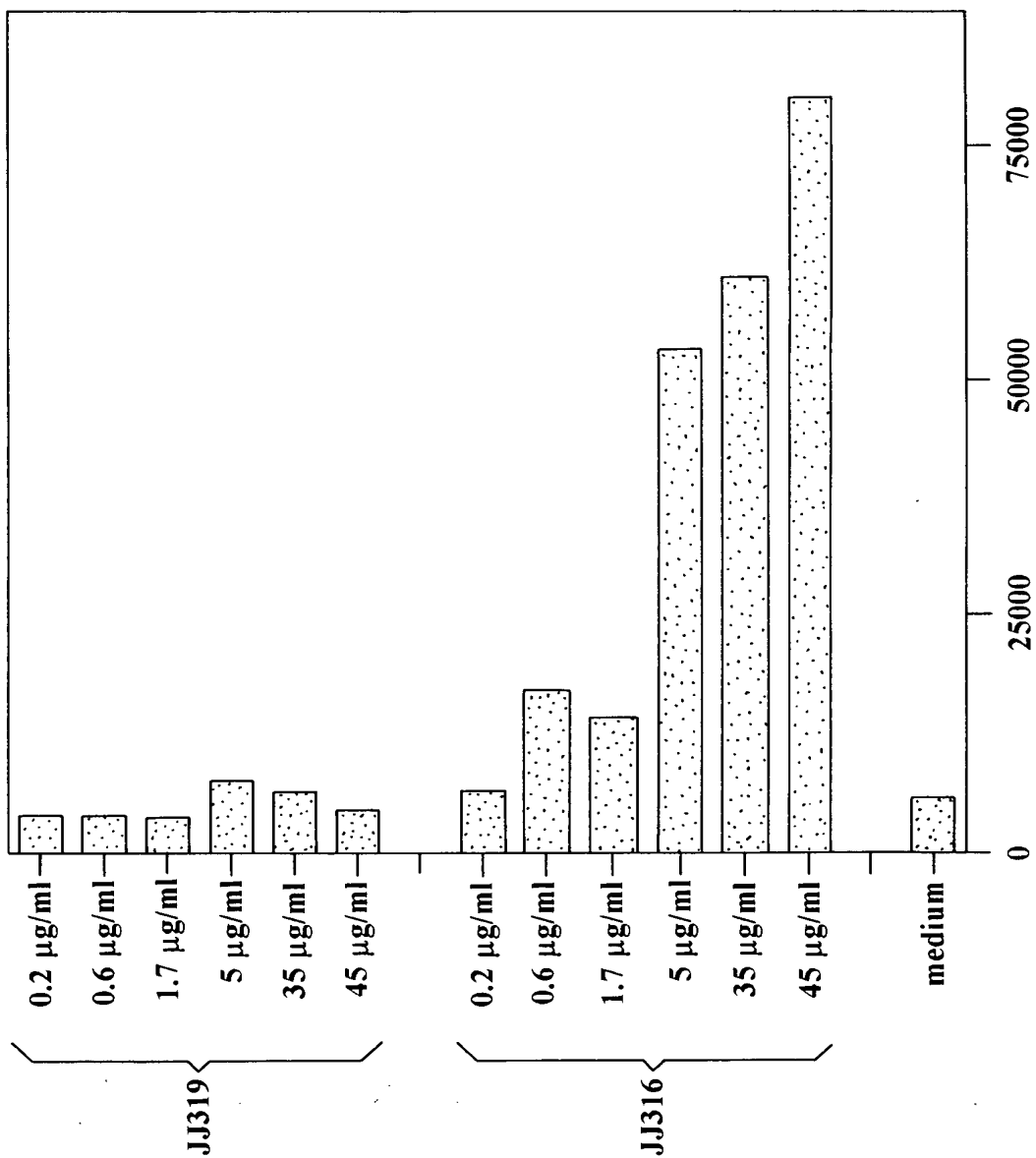


FIG. 8



APPROVED	O.G. FIG.	
BY	CLASS	SUBCLASS
DRAFTSMAN		

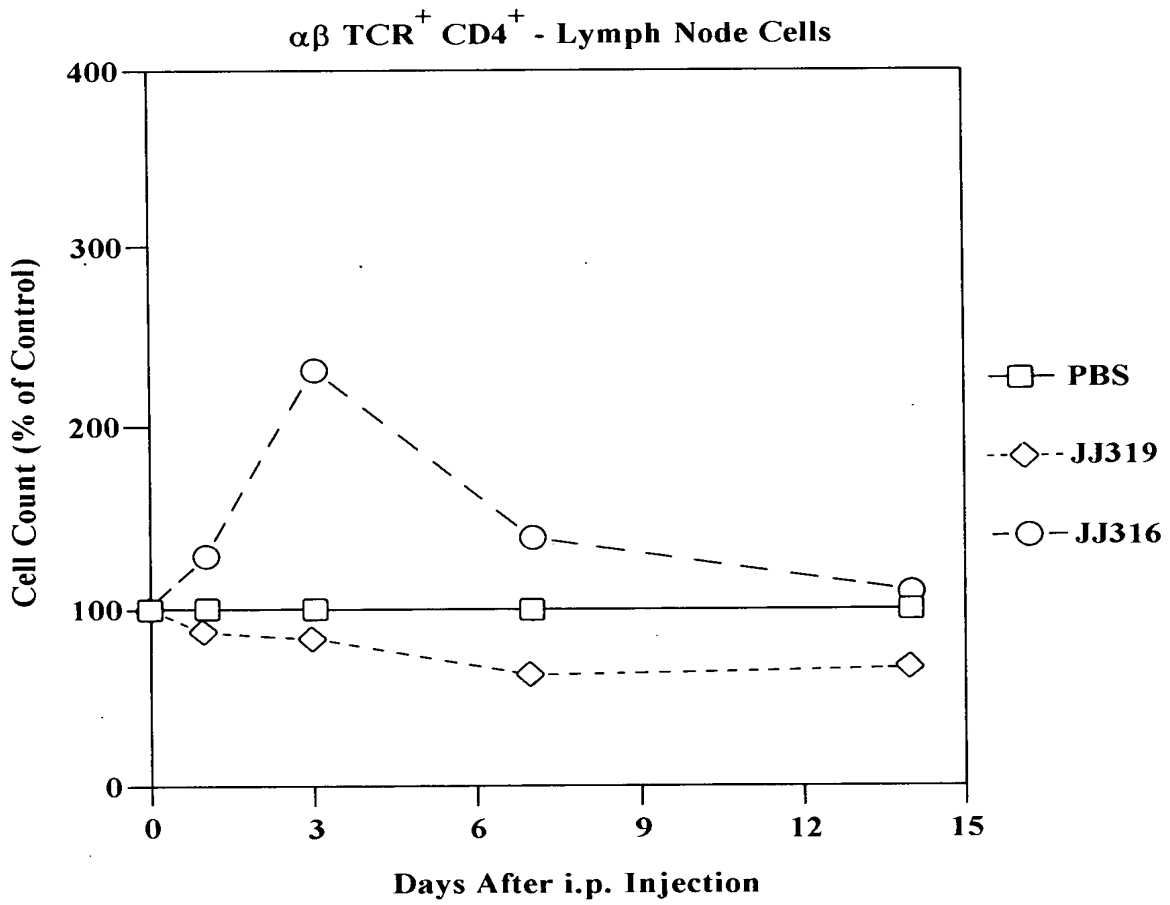


FIG. 9



APPROVED BY DRAFTSMAN	O.G. FIG.	
	CLASS	SUBCLASS

- ◇--- AA + PBS
- AA + Isotype control
- ▲--- AA + W3/25
- AA + JJ316
- *— AA + JJ319
- healthy

Increase in Paw Volume (%)

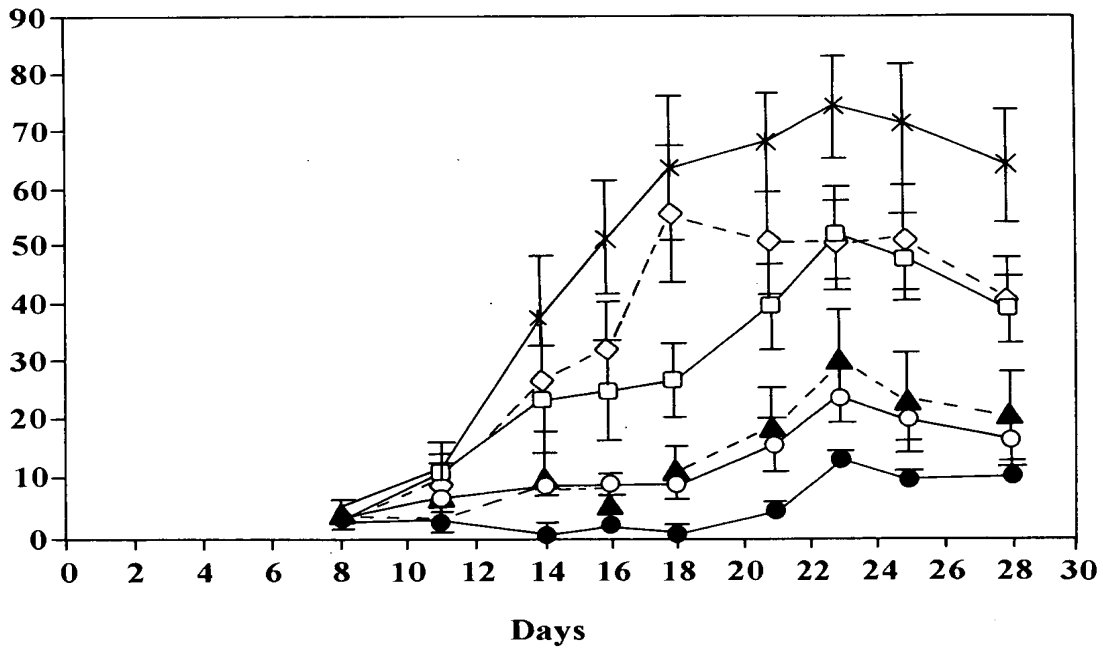
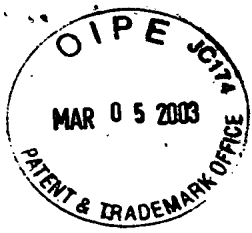


FIG. 10



- ◇--- AA + PBS
- AA + Isotype control
- ▲--- AA + W3/25
- AA + JJ316
- *— AA + JJ319
- healthy

O.G. FIG.	
CLASS	SUBCLASS
APPROVED BY DRAFTSMAN	

Arthritis Index

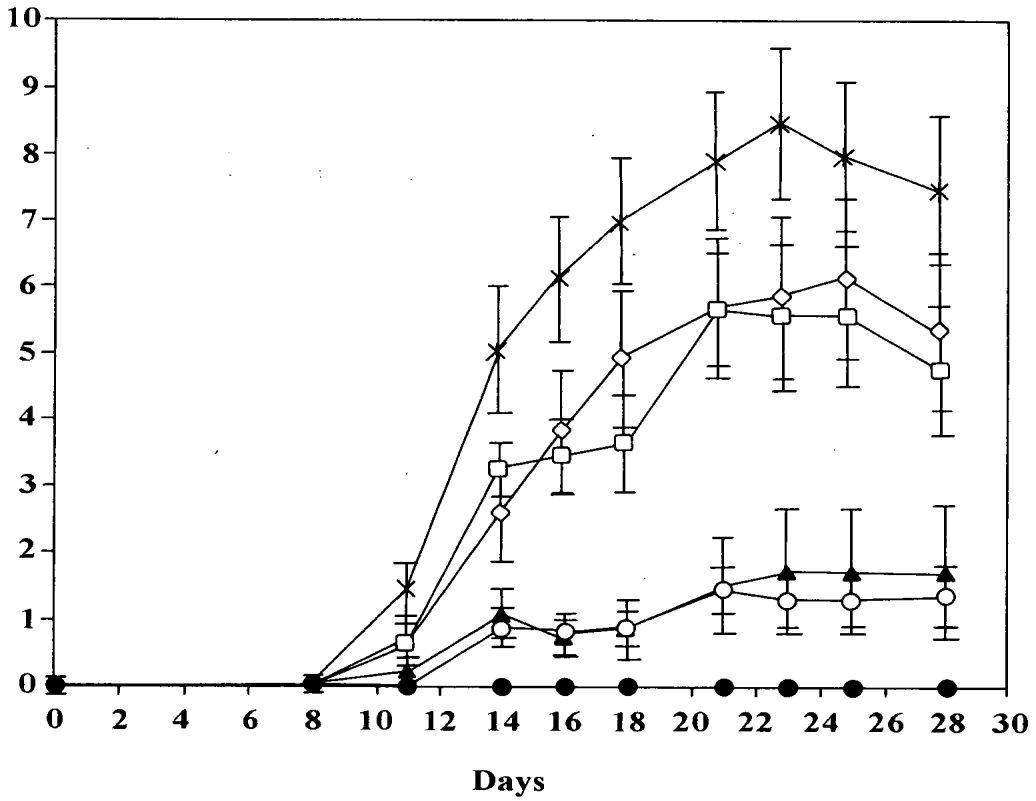


FIG. 11